

NEWTON HIGH SCHOOL

1953



newton high school

As the students of Newton High School returned to their studies in September, 1954, they entered one of the most modern school buildings in the East.

The combined efforts which made this building a reality reflect the desire of the community, through their representatives, the members of the board of education, to provide its children with the best educational opportunities available.

The building's flexibility of use will be extended beyond the school day, however. Many community affairs will be enhanced by the use of the auditorium where sloped floor, upholstered seats, modern decor, good acoustics, and complete lighting effects make the room comfortable and attractive. Other parts of the building, too, will offer more and more possibilities as time passes.

The return on such an investment can never be measured.

board of education

John M. Cronin, President

Harry Bixler, Vice President

Robert J. Ford

C. Burnett Freas

Dr. Jack J. Goldman

Mrs. Clifford Schmidt

Mrs. D. L. Spurgeon

Mrs. Charles Thompson

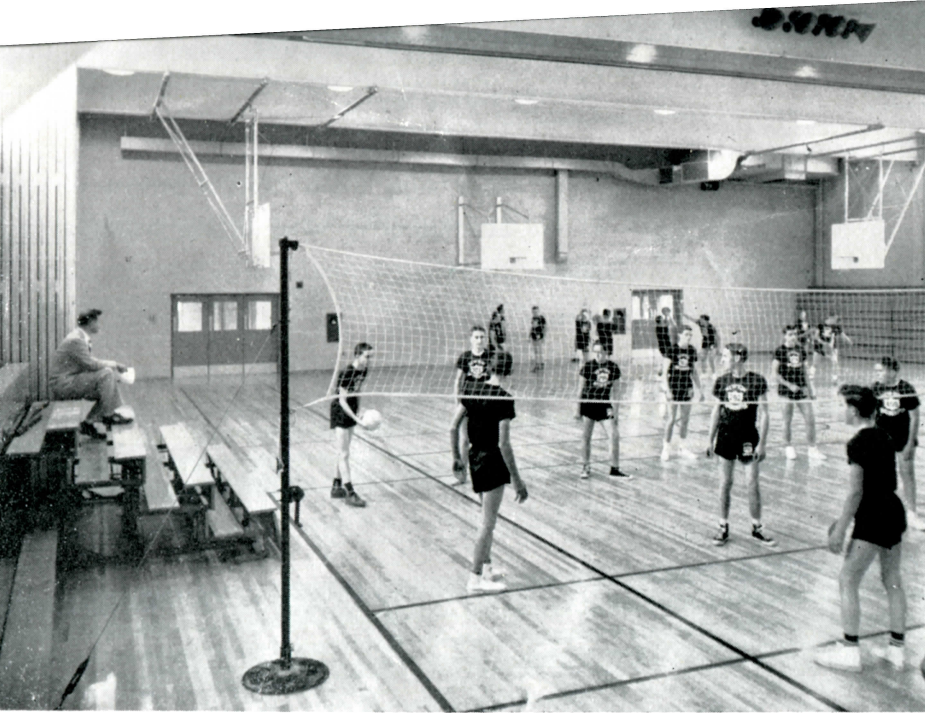
J. D. Weidenhafer

Sydenham W. Palmer, Secretary

Dr. James H. Johnson, Superintendent of Schools

Stuart R. Race, Retired Superintendent of Schools

Frederick L. Weaver, High School Principal



gymnasium

The double gymnasium with folding center doors can be used as two rooms for classes or as one large room for public sports events. Bleachers, which are folded back against the walls when not in use, will seat eight hundred spectators. Lockers, storage space, and showers are easily accessible.

library

The centrally-located, well-lighted library affords ample study space for the students. Its accessibility has resulted in a noticeable increase in the use of its forty-five hundred volumes.





office

The spacious general office leads into a series of private offices which make up the administrative wing of the building. It contains the telephone switchboard, the inter-communication system, and filing space.

lounge

The student lounge, located in the main corridor, is equipped with modern furniture in keeping with the architectural design of the school. This area offers a place for small meetings or informal gatherings about the fireplace.

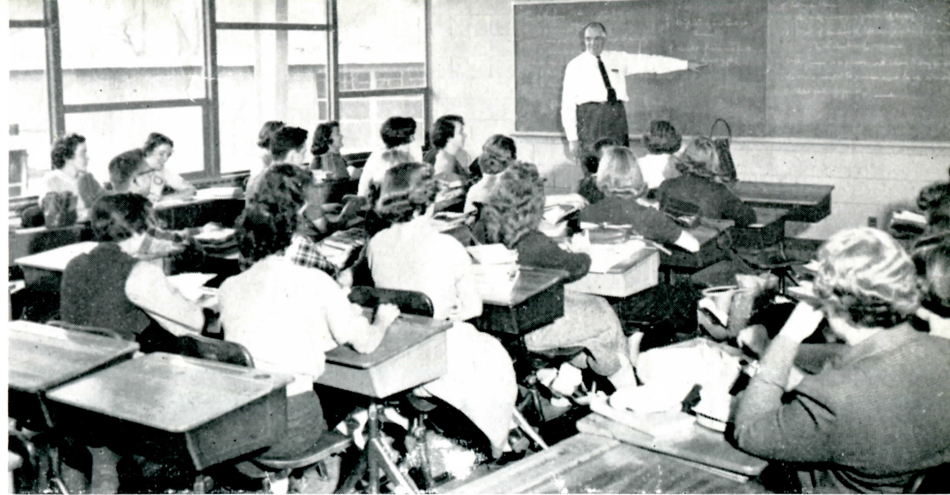


cafeteria

The pleasant surroundings of the cafeteria and the modern equipment of the kitchen will accommodate three hundred fifty students each lunch period. The room is also used for meetings, informal dances, and other activities.

classroom

Good lighting, green chalk boards, softly-colored walls, and increased storage and display space add to the comfort and appearance of the classrooms. These, as well as the corridors, are specially treated for better acoustics.



art

The latest in art-room furniture makes it easier for students to carry out their creative ideas. Opportunities are available for work in ceramics, oils, water colors, sculpture, and other media.

science

Each of the laboratories in the science wing is equipped as completely as possible to aid in the teaching of biology, physics, chemistry, and general science.





home economics

The home economics kitchen is decorated in pink and gray with black and white tables and chairs. The department also includes a sewing room and other facilities to aid in preparation for homemaking and modern living.

agriculture

Training in welding and other practical farming skills is available in the agriculture shops. This department is rated as one of the finest in the United States.



industrial arts

The industrial arts shop demonstrates another phase of a well-rounded program designed to meet the needs of youth. It is here that the manual skills which are so necessary to daily living are emphasized.

landscaping

The levels of the building are separated by graded areas which were prepared and planted by students and teachers of the vocational agriculture department.



masonry

Retaining walls and outside stairways are done in attractive stone work. Outside passages facilitate travel from one level to another.



student entrances

Sheltered bus entrances are located at the upper level of the building where thirty buses daily load and unload students from eleven sending districts.

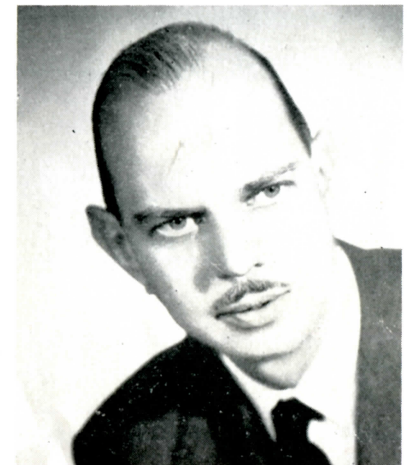




Photo by Towne Studios, Somerville, New Jersey.

contractors

Architect	Jay C. VanNuys and Associates Somerville, New Jersey J. Frank Perantoni C. Harvey Brockett
General Contractor	Fred J. Brotherton, Inc. Hackensack, New Jersey
Electrical Contractor	Wollenberg Electrical Company Paterson, New Jersey
Heating Contractor	Associated Engineers, Inc. Clifton, New Jersey
Plumbing Contractor	William Zabransky, Jr., Inc. Little Ferry, New Jersey
Steel Contractor	Industrial Engineering Works Trenton, New Jersey



J. C. Van Nuys